



BARGE - Lambert Spirit

Special features of this cargo barge include removeable bin wall access points for side loading and a steel deck for customized lash-ing configurations. This barge is capable of being ballasted and is a versatile unit serving customers in a range of dry bulk commodities and cargo sectors.

At Cutter Marine we approach each cargo movement and every service with the promise to deliver innovative marine solutions.

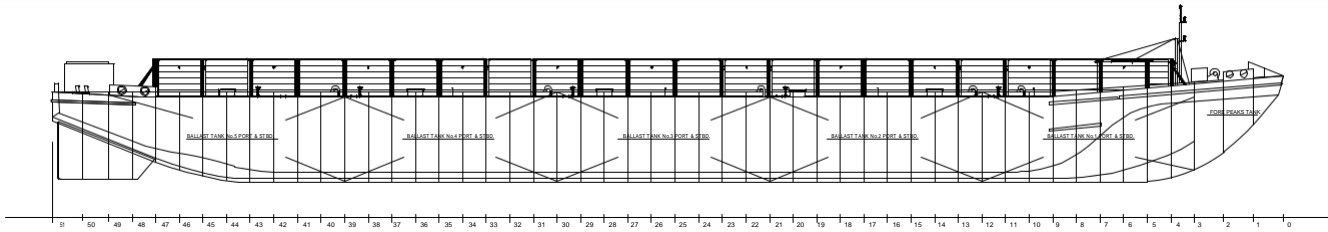
Since 1956 we've pushed the boundaries, becoming one of the foremost marine service providers in Canada. Customizable transportation and project solutions including marine transportation, marine construction, project cargo, salvage, towing and ship assist are available throughout the Great Lakes, St. Lawrence Seaway, East Coast and the Canadian Arctic.



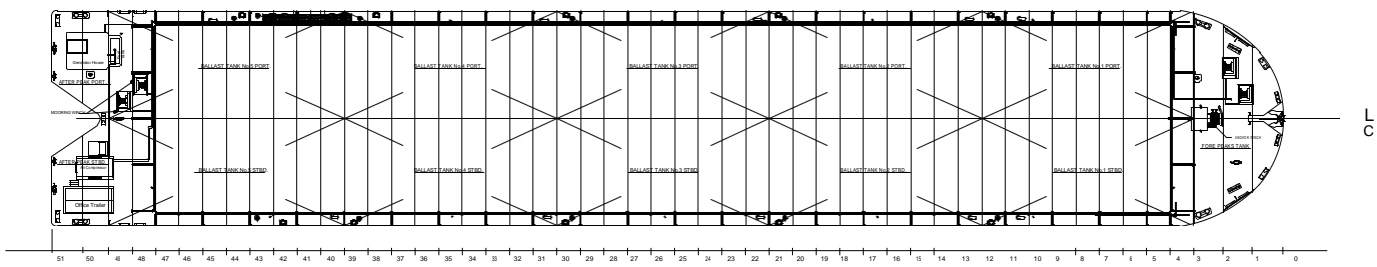
MAIN PARTICULARS

Length O.A.	400'	122 m
Breadth O.A.	70'	22.6 m
Moulded Depth	27' 6"	9 m
Light Draft	4'	1.22 m
Loaded Draft	21' 9"	6.60 m
Gross Tonnage	5,662 t	
Net Tonnage	5,235 t	
Official Number	825107	
Classification	Transport Canada	
Notation	Barge	
Flag	Canada	
Year Built	1968	

Better Marine Solutions



OUTBOARD PROFILE



DECK PLAN

CAPACITIES

Cargo Capacity	9,800 mt	
Water Ballast Rate	Full ballast capabilities 800 mt/hr	
Max Cargo Length:	329' 6"	100.4 m
Max Cargo Width:	60'	18.3 m
Cargo Deck Area	19,770 ft.sq	1,836.7 m.sq
Cargo Volume	237,240 ft.cu	6,717 m.cu
Uniform Deck Strength	1,100 lbs/ft.sq	

MACHINERY DETAILS

Mooring Winch	(4x) Pneumatic Winch
Air Compressor	750 Sullair
Windlass	(1x) Anchor Windlass
Generators	G.M. 400 kW (536 hp)
Ballast	(2x) Deepwell ballast pumps.

DECK EQUIPMENT DETAILS

Bin Wall	12' Removable
Cargo Doors	Port and STBD
Size	14' or 45'
Material Handling	Cat D4K

CAT D4K BULLDOZER

