



# BARGE - Alouette Spirit

Special features of the Alouette Spirit include fully retractable roof structure for weather sensitive cargo and bow ramp for ro-ro operations. This barge is capable of being ballasted and is a versatile unit serving customers in a range of commodities and cargo sectors.

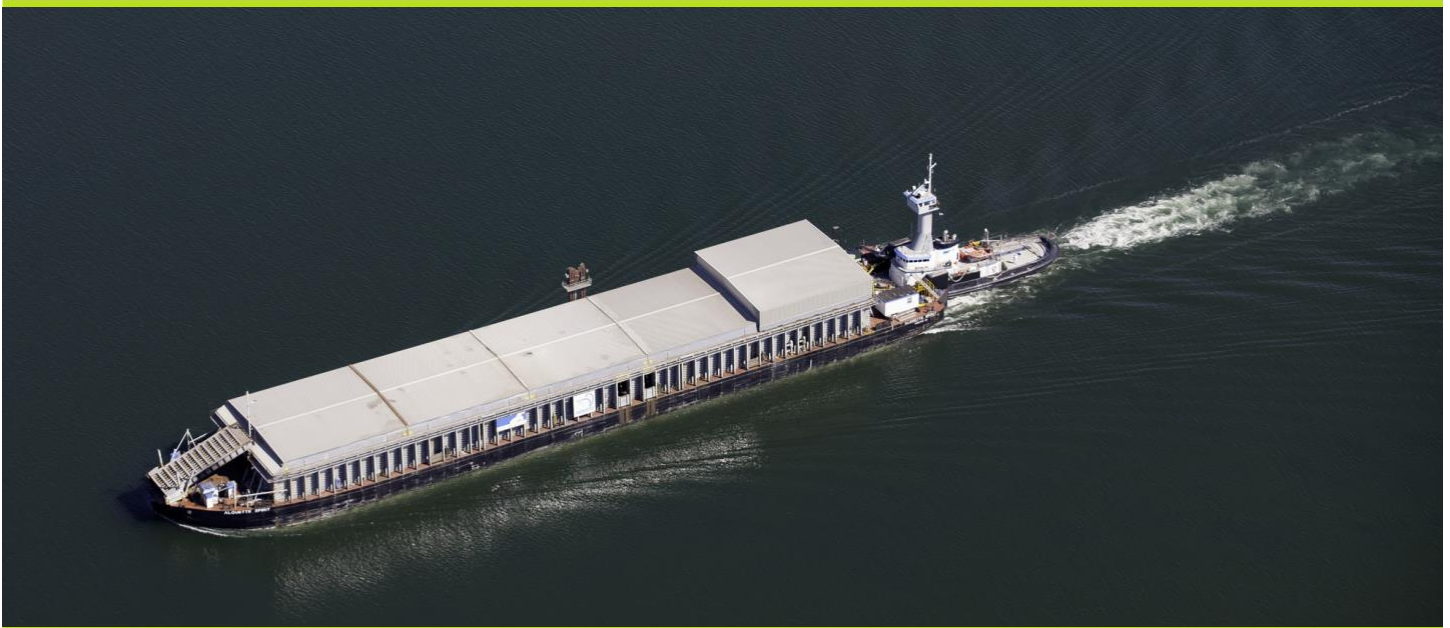
At Cutter Marine we approach each cargo movement and every service with the promise to deliver innovative marine solutions.

Since 1956 we've pushed the boundaries, becoming one of the foremost marine service providers in Canada. Customizable transportation and project solutions including marine transportation, marine construction, project cargo, salvage, towing and ship assist are available throughout the Great Lakes, St. Lawrence Seaway, East Coast and the Canadian Arctic.



## MAIN PARTICULARS

Length O.A.	425'	129 m
Breadth O.A.	74'	22.5 m
Moulded Depth	29' 6"	9 m
Light Draft	4'	1.22 m
Loaded Draft	19'	5.8 m
Gross Tonnage	10,087 t	
Net Tonnage	3,113 t	
Official Number	825966	
Classification	Transport Canada	
Notation	Barge	
Flag	Canada	
Year Built/Re-built	1969 / 2005	



## CAPACITIES

Cargo Capacity	10,500 mt
Water Ballast	Full ballast capabilities
Rate	800 mt/hr
Cargo Deck Area	22,247 ft.sq
Cargo Volume	400,461 ft.cu
Deck Strength	1400 lbs/ft.sq

## DECK EQUIPMENT DETAILS

Bin Wall	18' Steel Bin Walls
Cargo Doors	1 Retractable Bow Door @ 18' x 14' 4 Side Doors @ 7' x 10' - Port Side 1 Side Door @ 4' x 40' - STBD Side
Retractable Canopy	31 Sections Covered With Heavy-Duty Tarpaulins
Extended Size	337' x 65'11"
Retracted Size	100' x 65'11" (Which can be situated FWD or AFT)
Hydraulic Bow Ramp	51' x 18' 40,000 kgs Max or 10,000 kgs Axle weight

## MACHINERY DETAILS

Bow Thrusters	500 hp
Mooring Winch	(4x) Pneumatic Winches
Compressor	Sulair 750DLQ
Windlass	(1x) Anchor Windlass
Generators	(1x) Lister Petter 25.9 kW (35 hp)
Hyd. Power Packs	(2x) Cummins 434 kW (460 hp) Each
Ballast	(2x) Deepwell pumps

## SPECIAL FEATURE

The barge Alouette Spirit and the tug Wilf Seymour are de-signed to be operating as an ATB unit. The coupling system is designed by Blutworth.